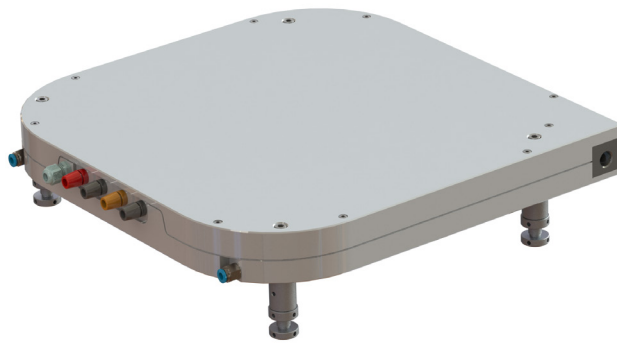


TGModule D

Ampliconyx full gain module is a ready-to-use optical unit. The module ships with full test report and user manual. The module includes all needed components including pump diodes, only water cooler and power supply unit should be provided by the user. This unit will be assembled to match customer needs, contact our sales to start discussion.



Specifications

Wavelength	nm	1030-1050
Output power	W	Up to 40
Input signal fiber		HI1060 or similar. Upon request - custom fiber with core diameter up to 15 μm and NA < 0.11
Power of seed source	mW	> 0.5
Polarization		Random
M^2		< 1.2

AMPLICONYX
AMPLICONYX

New frontier in ultrafast fiber laser performance.

Contact:
sales@ampliconyx.com

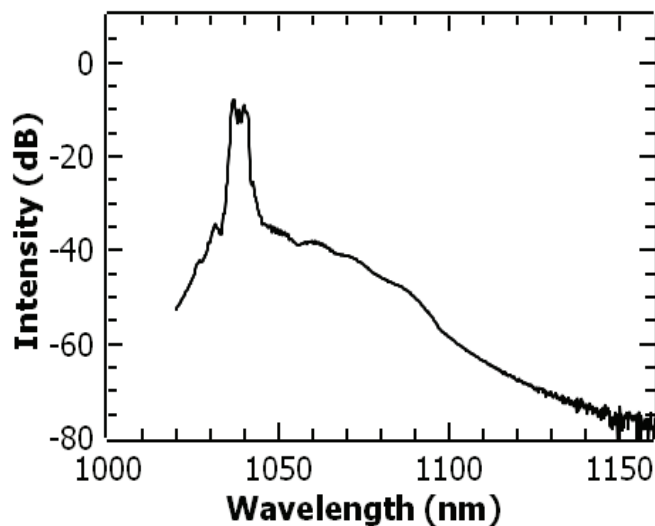
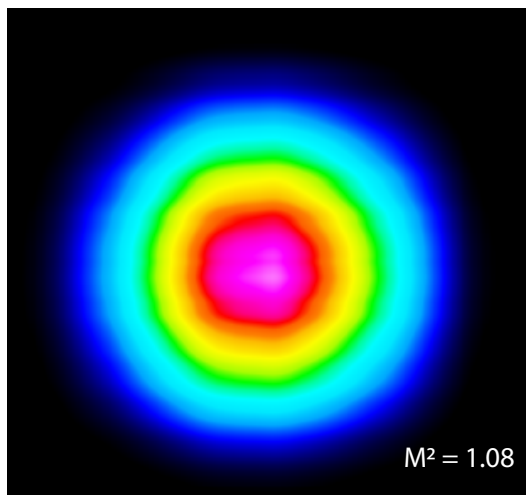
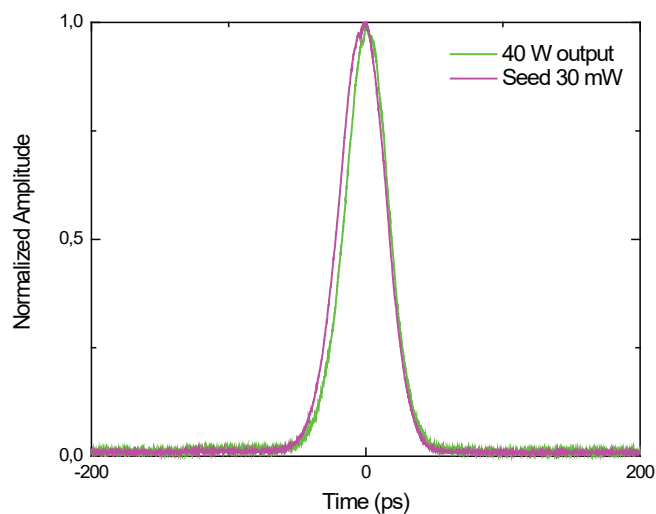
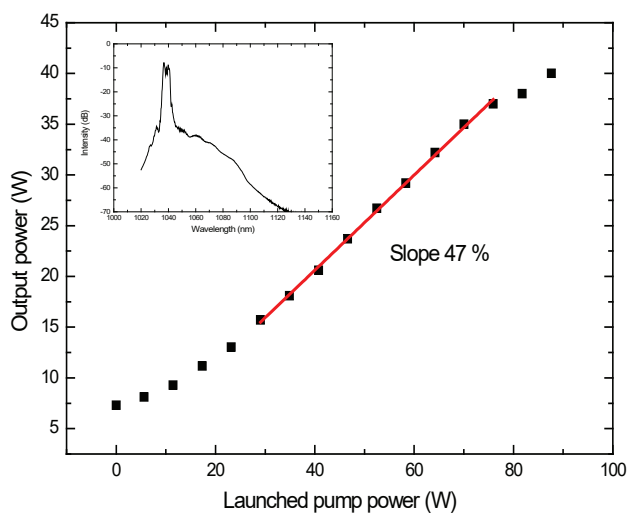
Example amplification

Test condition: 21 MHz, 25 ps, 30 mW 1035 nm pulsed input signal

Output average power: 40 W

Beam quality M^2 : 1.08

Amplification: 31 dB



AMPLICONYX
AMPLICONYX

New frontier in ultrafast fiber laser performance.

Contact:
sales@ampliconyx.com